

RH712 Vibration Analyzer

- **Picture**



- **Features**

- **Touch Screen**
- **Route measurements downloaded from PC software**
- **Waveform/spectrum analysis and alarm remind**
- **Manual input function**
- **Infrared temperature measurement**
- **Set equipment status**
- **Multi-communication method with server: Wi-Fi or USB**
- **Camera function**
- **Professional PC analysis software**
- **Explosion proof version is available and optional**
- **CE marking available**

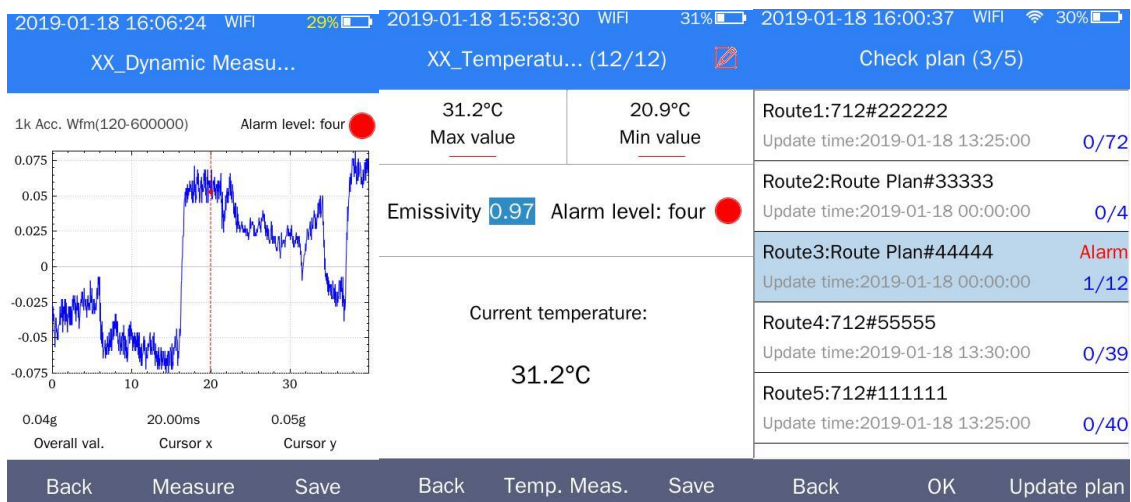
● Function Introduction

Route measurements downloaded from PC software

Route	Update time	Progress	Measurement
Route1:test1	2019-01-18 14:12:00	0/3	8k Dis. Wfm(120-6000)
Route2:test2	2019-01-18 14:12:00	0/2	1k Acc. Wfm(120-600000)
Route3:test3	2019-01-18 14:12:00	0/3	8k Acc. Wfm(120-6000)
Route4:test4	2019-01-18 14:15:00	0/21	1k Vel. Wfm(120-600000)
			8k Vel. Wfm(120-6000)
			1k Dis. Wfm(120-600000)

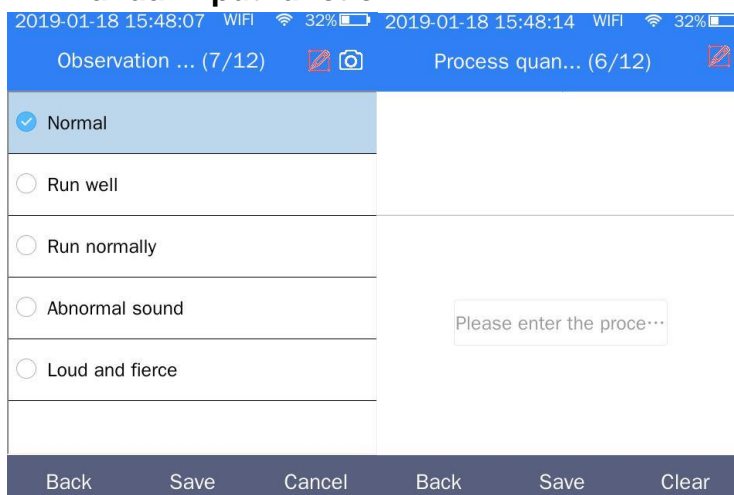
Back OK Update plan Back Daq.

Waveform/spectrum analysis and alarm remind



Users can use touch screen to zoom in/out the graph. Then the value exceeds the alarm threshold. There will be an icon to remind the users.

Manual input function

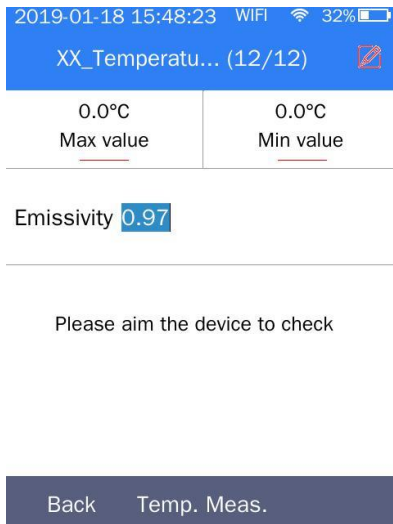


The screenshot shows a form for manual input. It has a list of observation options on the left and a text input field on the right. The 'Normal' option is selected. The text input field contains the placeholder text 'Please enter the proce...'. The bottom navigation bar includes 'Back', 'Save', 'Cancel', 'Back', 'Save', and 'Clear'.

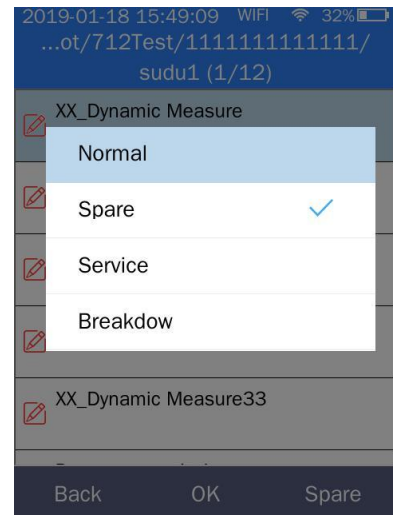
Back Save Cancel Back Save Clear

Users can manually input the observation, process lubrication information etc.

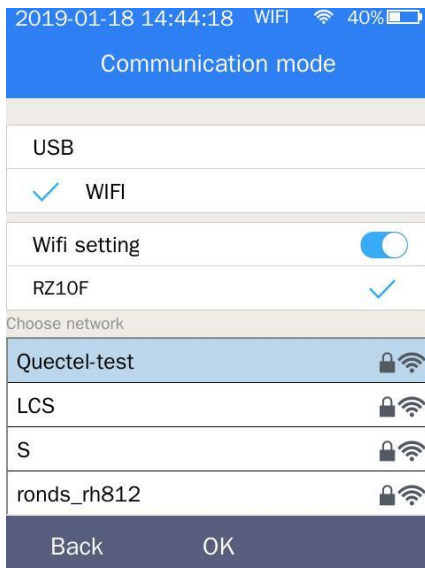
Infrared temperature measurement



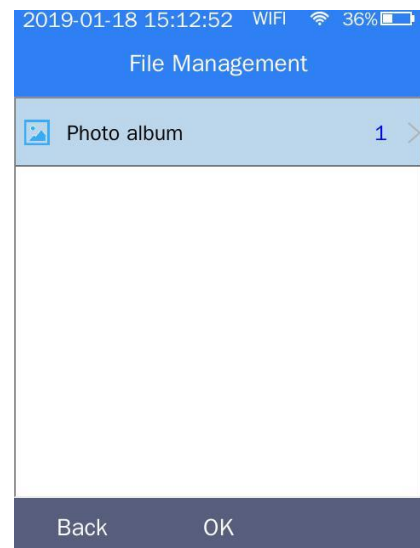
Set equipment status



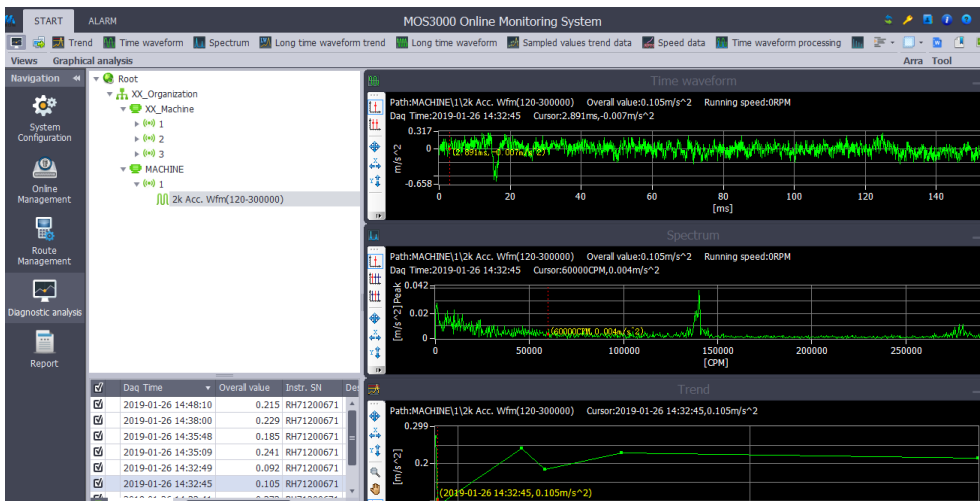
Multi-communication method with server: Wi-Fi or USB



Camera function



Professional PC analysis software



The software MOS3000 includes many analysis tools, trend, spectrum, waveform, multi-waveform/spectrum, waterfall, envelop etc.

Technical index:

Items	Specification
Channel	CH1: Vibration (ICP accelerometer)、 voltage ($\pm 5V$ AC)
Data acquisition parameters	<p>Frequency span: 2 ~ 10kHz</p> <p>Sampling frequency: Maximal 25.6KHz</p> <p>Hardware Integral: integration, double integration</p> <p>A/D conversion: 16 bit</p> <p>Harmonic distortion: < -70dB</p> <p>Precision: $\pm 2\%$</p> <p>parameters: Sampling frequency, high pass filter, low pass filter, Sampling length</p> <p>Waveform length: 1024、2048、4096、8192</p> <p>Lines: 400、800、1600, 3200LINES</p> <p>Averaging: linearity、 peak hold</p> <p>Window function type: Rectangle, Hanning</p>
Internal infrared temperature detector	<p>Temperature range: -30 ~ 420 ($^{\circ}C$)</p> <p>Precision: $\pm 2\%$, $\pm 2^{\circ}C$ Maximal</p> <p>Emission rate: 0 ~ 1 adjustable</p> <p>Distance coefficient: 25: 1</p>
Dimension	<p>height×width×depth: 195×80 ×37 (mm)</p> <p>grip size (67width×30depth) : 68×31 (mm)</p>
LCD	3.5inch, 640×480 pixels, IPS TFT capacitive touch screen
Weight	<p>Normal: 465g</p> <p>EX: 455g</p>
Vibration sensor	External vibration sensor connection
Keyboard	21keys life: 2 million times, with backlight
Working environment	<p>Temperature: -10 ~ 50$^{\circ}C$</p> <p>humidity: < 95% (without condensate)</p> <p>protection grade IP65, dustproof, waterproof</p>
Charging time	4 hours

Working time	working Time (Continuous) >10 Hours
Communication	USB2.0 WIFI
Storage capacity	8G
Radio frequency identification	UHF 900M RFID recognition distance 30CM
★Camera	500 5million pixels, auto-focus camera
Flashlight	Flashlight, convenient for dark place
Lion battery	4.5hours for normal version, 2.5hours for EX version
Anti-explosion (optional)	ExibIIBT4 Gb
CE Certification	Pass CE certification
Metrology attestation	Pass national metrology bureau verification